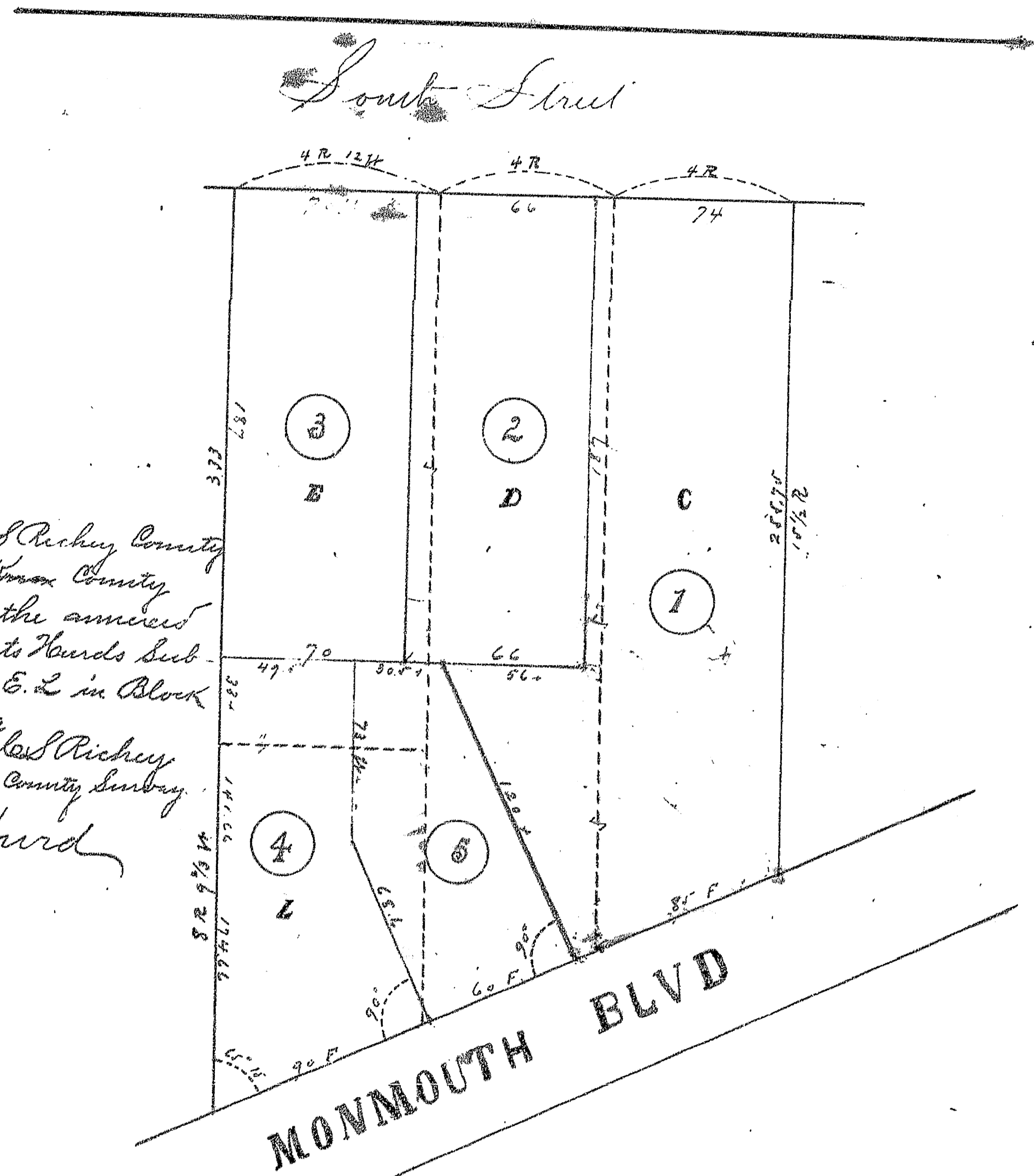


Plat of  
 Harde Subdivision  
 of Lots C, D, E & L of a Subdivision of Block 117  
 in the City of Galisburg, by Knox College in Second  
 South Addition

Knox College subdivision lines and distances  
 marked on plat in Block Harde Subdivision  
 and numbers in red



State of Ills.  
 Knox Co } J. C. Pichay County  
 Surveyor of said Knox County  
 hereby certify that the annexed  
 plat truly represents Harde sub-  
 division of Lots C, D, E, L in Block  
 117 City of Galisburg  
 Aug. 4 1893  
 J. C. Pichay  
 County Surveyor

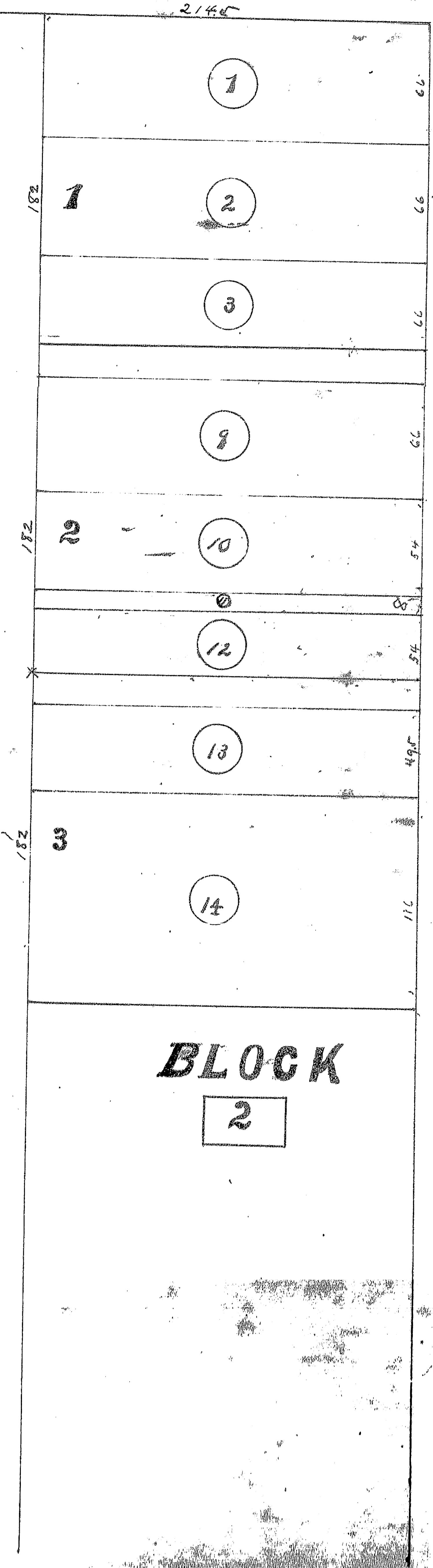
Albert Harde

State of Illinois  
 Knox County

I Samuel V. Sturkey Clerk Circuit  
 Court in and for the said County  
 know to me to be the same persons whose name is subscribed to the  
 foregoing instrument appeared before me this day in person and advised  
 that he signed, sealed, and delivered the said instrument as  
 his free and voluntary act, for the use and purpose therein set forth  
 making the release and waiver of the rights of homestead

Given under my hand and official seal  
 this 21<sup>st</sup> day of August A.D. 1893

S. V. Sturkey  
 Clerk



Map  
 of  
 Subdivision of Lots 1, 2 & 3  
 of  
 Block 2 Ferris 2<sup>nd</sup> Addition  
 Galisburg Illinois

Explanation

All numbers, lines, and distances of  
 original plat are given in black and  
 subdivisions in red, distances given in  
 in feet and initials of a foot

State of Ills.  
 Knox Co

J. C. Pichay Co Surveyor  
 of said County hereby certify that I  
 have surveyed and subdivided Lots  
 1, 2 & 3 of Block 2 Ferris Sec  
 Addition to the City of Galisburg, and  
 the annexed plat truly represents said  
 subdivision  
 Aug 25. 1893 - J. C. Pichay  
 Co Surveyor